

1 2

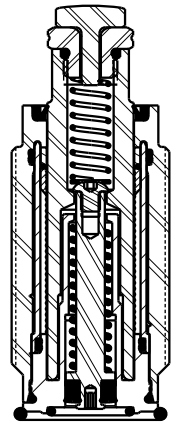
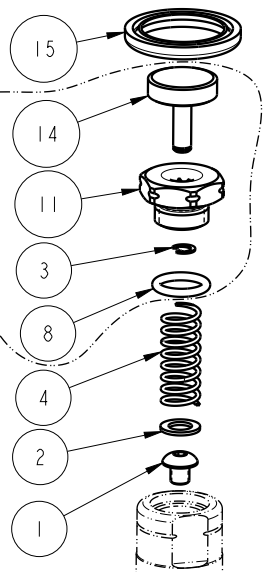


SEE IS1023 FOR SERVICE INSTRUCTIONS.
LUBRICATE ALL SEALS WITH CLEAN
HYDRAULIC OIL PRIOR TO ASSEMBLY.
DO NOT USE SILICONE BASED LUBRICANTS.

APPLY MEDIUM STRENGTH
THREAD LOCKER (BLUE)
TORQUE TO 9 Nm
(80 IN-LB)

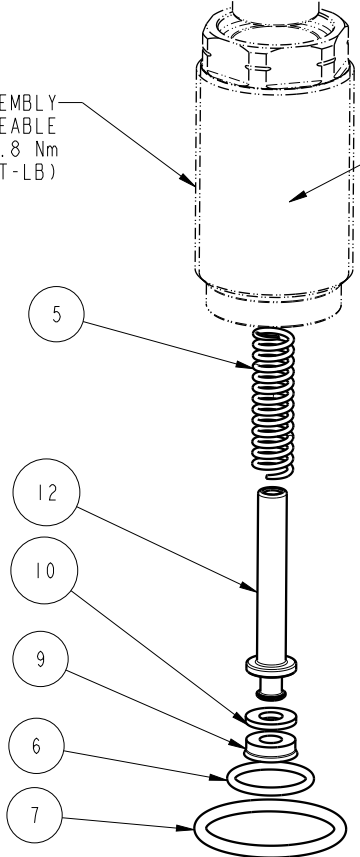
CONTACT BOLT PPS
91060802- Order for
complete assembly

TORQUE TO
1.25 Nm
(11 IN-LB)



PLUNGER
These work supports are
fully rebuildable to full
factory original capacity by
any authorized Vektek repair
facility. All seals can be
replaced by any authorized
repair facility

BODY ASSEMBLY
NOT REPLACEABLE
TORQUE TO 67.8 Nm
(50 FT-LB)



INSTALL LIP
SIDE TOWARD
BOTTOM OF
PISTON

NO	QTY	PART NO	DESCRIPTION	STD SEAL KIT	SPRING KIT
1	1	21410075	BHCS, 8-32 x 3/16 SELFLOCK, SST		
2	1	21430001	WASHER		
3	1	23010008	RETAINING RING, C, EXT, 5/32		
4	1	23350083	SPRING, COMPRESSION		X
5	1	23355023	SPRING, COMPRESSION		X
6	1	39000061	O-RING, (-016)	X	
7	1	39001052	O-RING, (-122)	X	
8	1	39002009	O-RING, (-012)	X	
9	1	39050028	SEAL, BEVEL, 3/16 X 7/16 X 1/8	X	
10	1	39054039	BU RING, (-201)	X	
11	1	41060801	BOLT, ADAPTER, WS, 17.8kN, PPS		
12	1	81010815	PISTON, WS, FA, 3000 & 13.4kN, LS		
13	1	81030803	RETAINER, WS, FA, HC, 4000, LS, PPS		
14	1	81060802	BOLT, CONTACT, WS, 4000, PPS		
15	1	39V10023	WIPER,PRESS-IN, (3/4), VBGV	X	
N/A	N/A	60100135	KIT, SEAL, WS, FA, CM, HC, 17.8kN, PPS	NOTED	N/A
N/A	N/A	61100225	KIT, SPRING, WS, FA, HC, 4000, LS	N/A	NOTED
N/A	N/A	IS1023	INSTRUCTION SHEET	N/A	N/A
N/A	N/A	IS5003	INSTRUCTION SHEET, PPS	N/A	N/A

PARTS LIST



VEKTEK, INC.
1334 E. SIXTH AVE. P.O. BOX 625
EMPORIA, KS. 66801 U.S.A.

A	4631	RELEASE	ALS	3/25/22
REV	IN ACCORDANCE WITH ECN	EFFECTIVE DATE	REVISED BY	DATE
DRW BY:	ALS	DRAWING STATUS: Released		
DATE:	3/25/22	PRODUCTION APPROVED FOR RELEASED STATUS ONLY		

ASSEMBLIES AFFECTED
41070816PS

PARTS LIST, ASSY,WS,FA,CM,HC,17.8kN, LS, PPS

SIZE
A MPL1080

REV
A

FORM FEG035_PL_ASIZE, REV. B

SHEET 1 OF 1